



V-SERIES

COMMERCIAL VINYL WINDOWS & DOORS

Casement | Project-Out | Hung | Horizontal Slider | Fixed | Doors



Render courtesy www.VerveColumbus.com

**Design Flexibility.
Budgetary Advantages.
Advanced Energy Efficiencies.**

www.QuakerCommercialWindows.com

V-SERIES

COMMERCIAL VINYL WINDOWS & DOORS

Quaker's V-Series family of commercial vinyl windows and doors is the new benchmark for today's design professionals, builders and glazing contractors. The V-Series puts an end to outdated perceptions of commercial vinyl while securing trust on both structural and thermal fronts.

V100 V200 V250 V300 V700

An ideal, cost-conscious window and door alternative for low-rise light commercial projects.

Design flexibility paired with energy savings. Built-in budgetary advantages are a bonus.

Windows and doors that level-up from the norm. Built to stand strong against feisty inland weather.

Effectively taking vinyl to new heights. An advantageous go-to in place of traditional aluminum.

Exceptional Impact-tested vinyl windows. Specifically designed to meet ASTM 1886 test requirements.

Talo Apartments
Golden Valley, MN
Developer: Forum Investment Group
Contractor: Greiner Construction
Architect: Tushie Montgomeyer
Comm. Window Distributor: Scherer Bros.



www.QuakerCommercialWindows.com

V-SERIES

COMMERCIAL VINYL WINDOWS & DOORS

Selection Guide

Model	Series	Frame Depth	Structural Test Rating	Test Size	Design Pressure	Air Infiltration	Water Resistance	U-Value Range [#]	STC Range ^x	OITC Range ^x
Single Hung	V100	2 3/4"	R40	40" x 63"	40	<.30	6.06	.25-.31		
	V200	3 1/4"	R35	40" x 63"	35	<.30	5.43	.25-.34		
	V250	3 1/4"	LC35	44" x 75"	35	<.30	5.43	.25-.34	29-35	24-29
	V300	3 1/4"	CW50	56" x 91"	50	<.30	7.5	as low as 0.25		
Horizontal Slider	V100	2 3/4"	R40	63" x 44"	40	<.30	6.06	.25-.31		
	V200	3 1/4"	R40	63" x 44"	40	<.30	6.06	.23-.35		
	V250	3 1/4"	LC35	63" x 44"	35	<.30	7.5	.23-.35		
	V300	3 1/4"	CW50	75" x 44"	50	<.30	7.5	as low as 0.25		
Fixed	V100	2 3/4"	R40	60" x 60"	40	<.30	6.06	.23-.29		
	V200	3 1/4"	Up to R50	48" x 48"	Up to 50	<.30	Up to 7.5	.20-.32		
	V250	3 1/4"	Up to LC35	56" x 56"	Up to 35	<.30	Up to 7.5	.20-.32		
	V300	3 1/4"	CW50	78" x 78"	50	<.30	7.5	.14-.28	35	29
Casement	V200	3 1/4"	R40	24" x 60"	40	<.30	6.06	.21-.32		
	V250	3 1/4"	LC30	36" x 72"	30	<.30	7.5	.21-.32		
	V300	3 1/4"	CW50	36" x 78"	50	<.30	7.5	.17-.28	34-41	29-34
	V700	3 1/4"	CW50	36" x 78"	50	<.30	7.5	.23-.27	34-41	29-34
Project-Out	V200	3 1/4"	R40	48" x 18"	40	<.30	6.06	.22-.32		
	V250	3 1/4"	LC35	48" x 24"	35	<.30	7.5	.22-.32		
	V300	3 1/4"	CW50	60" x 32"	50	<.30	7.5	.18-.28	35	29
	V700	3 1/4"	CW50	60" x 32"	50	<.30	7.5	.24-.28	35	29
Double Hung	V200	3 1/4"	R40	40" x 63"	40	<.30	7.5	.23-.33		
	V250	3 1/4"	LC35	36" x 84"	35	<.30	7.5	.23-.33		
Terrace Door (all models)	V300	3 1/4"	CW50**		50**	<.30**	7.5**			
Sliding Door	V100	4 7/8"	R50	71" x 80"	50	<.30	7.5	.28-.29		
	V200/V250	5 5/8"	R50	72" x 82"	50	<.30	7.5	.17-.30		

*-Ranges based on multiple Low-E/Argon I.G. combinations

^x-Ranges based on multiple I.G. combinations

**_Projected rating and test data. Testing in progress as of 6-2023

All ratings listed are NAFS certified. Periodic re-certification testing is required thus data shown may vary slightly.

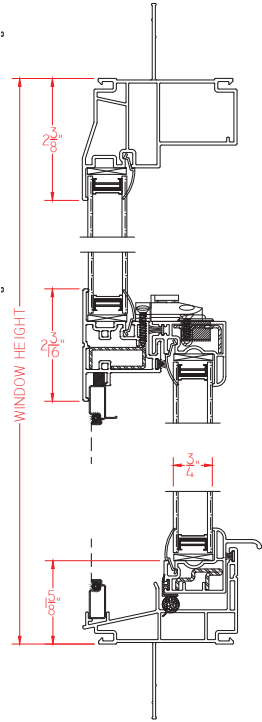
V-SERIES

COMMERCIAL VINYL WINDOWS & DOORS

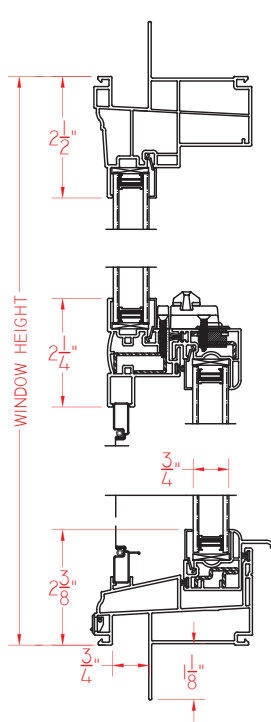
Products

Single Hung

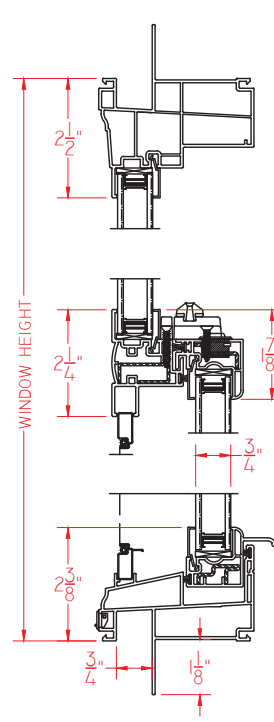
V100 Series (R40)



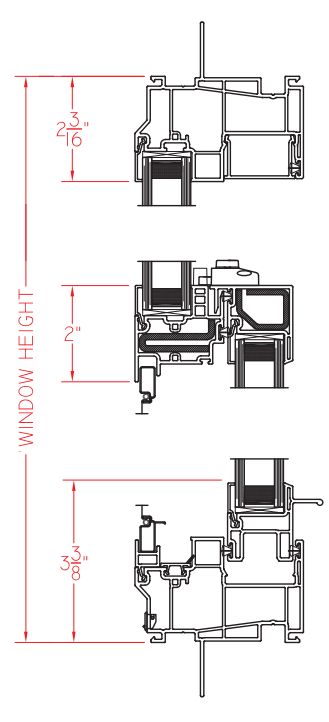
V200 Series (R35)



V250 Series (LC35)



V300 Series (CW50)



All ratings listed are NAFS certified



Atria Arista Luxury Apartments
Broomfield, CO
Developer/Architect: KEPHART
General Contractor: TX-Morrow Construction Co.
Comm. Window Distributor: Wholesale Bldg. Products

800-347-0438



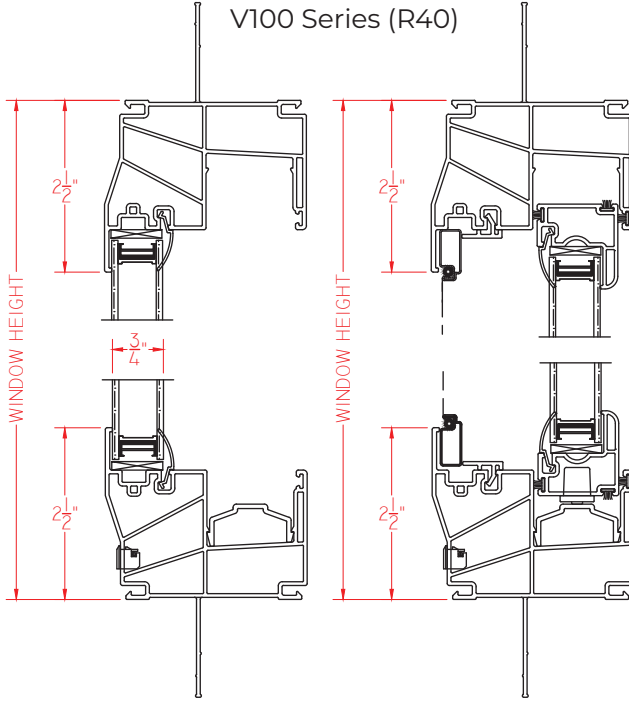
V-SERIES

COMMERCIAL VINYL WINDOWS & DOORS

Products

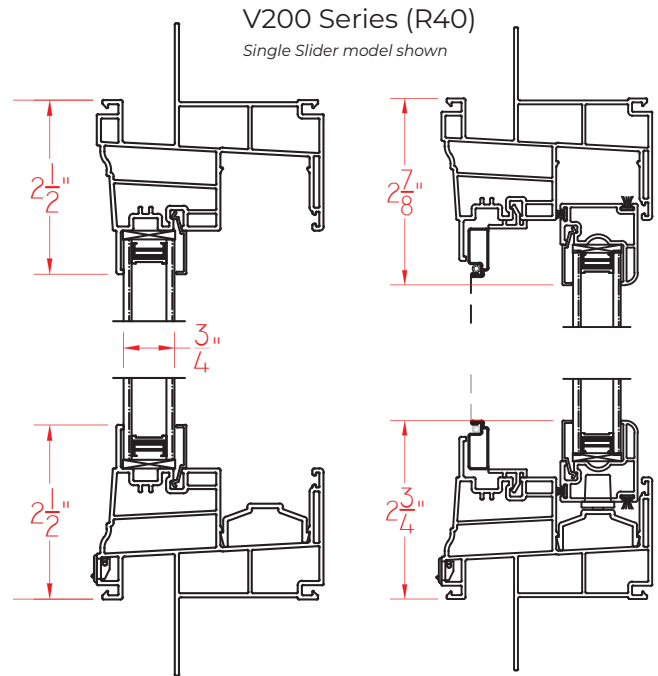
Horizontal Slider

V100 Series (R40)



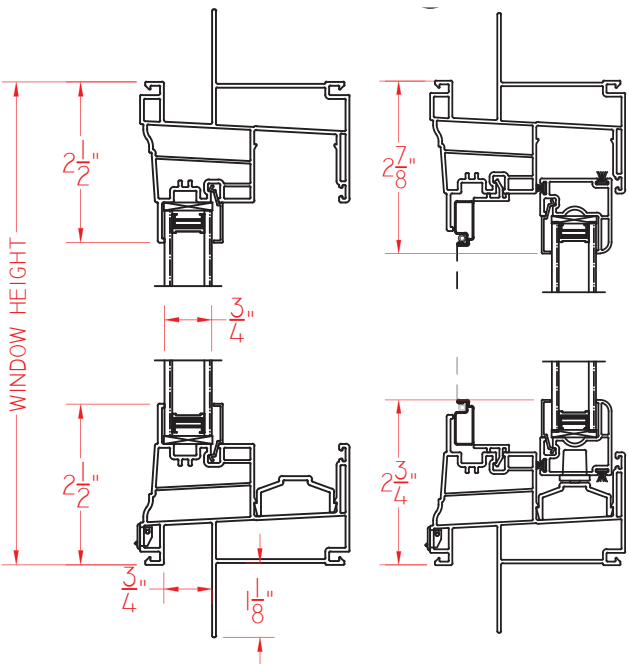
V200 Series (R40)

Single Slider model shown

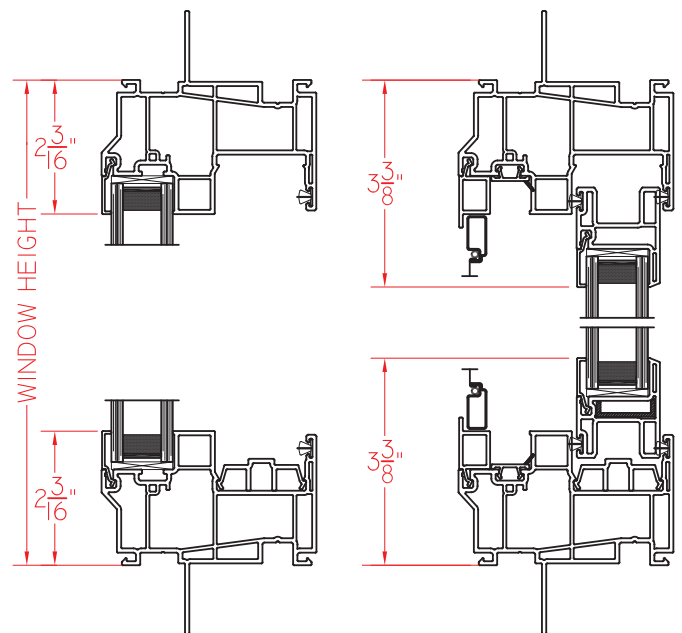


V250 Series (LC35)

Single Slider model shown



V300 Series (CW50)



All ratings listed are NAFS certified

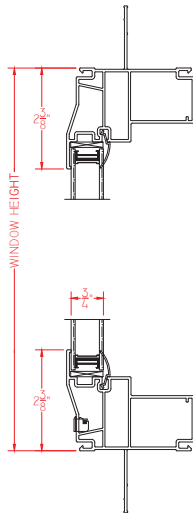
V-SERIES

COMMERCIAL VINYL WINDOWS & DOORS

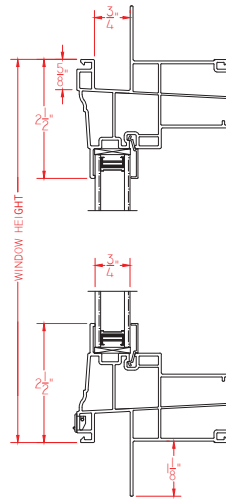
Products

Fixed

V100 Series (R40)

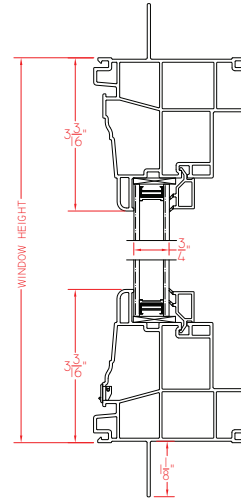


Sash set model to match V200 hung and horizontal slider models

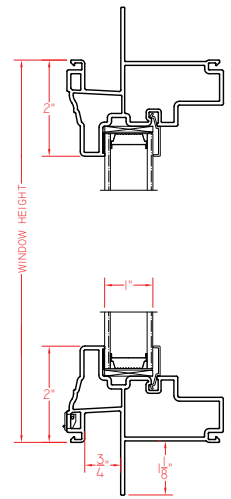


V200 Series (R50)

Sash set model to match V200 casement and project-out models

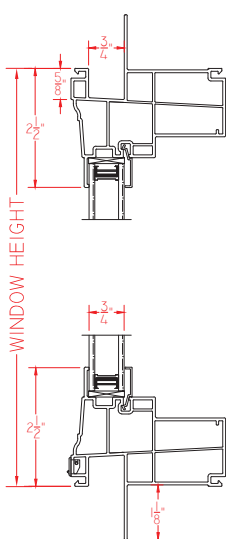


Direct set model compatible with all V200 models

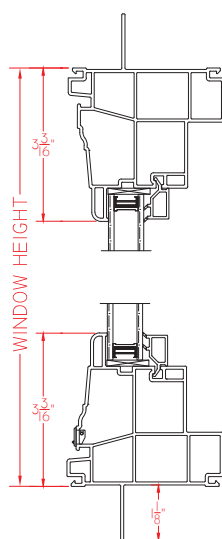


V250 Series (LC35)

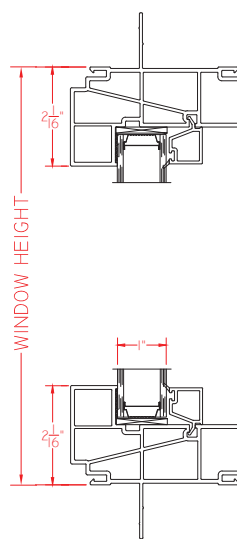
Sash set model to match V250 hung and horizontal sliding models



Sash set model to match V250 casement and project-out models

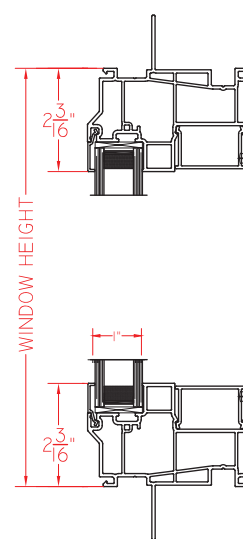


Narrow rail model to match V300 casement and project-out units

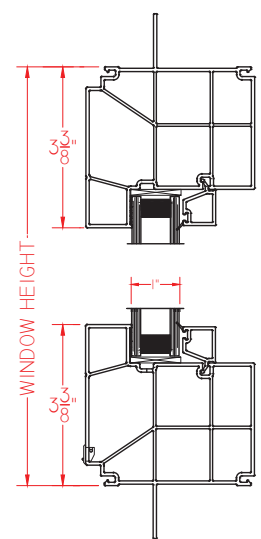


V300 Series (CW50)

Narrow rail model to match V300 hung and horizontal sliding units



Wide rail model compatible with all V300 models



All ratings listed are NAFS certified

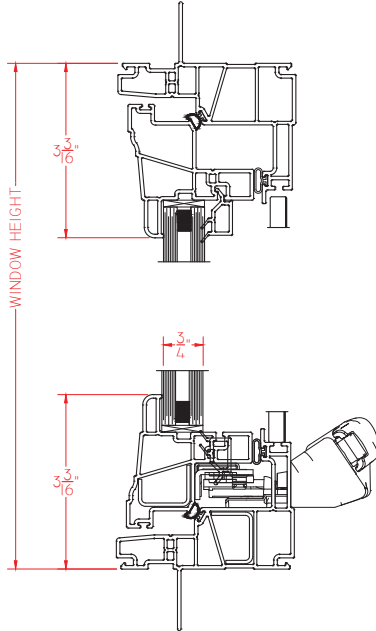
V-SERIES

COMMERCIAL VINYL WINDOWS & DOORS

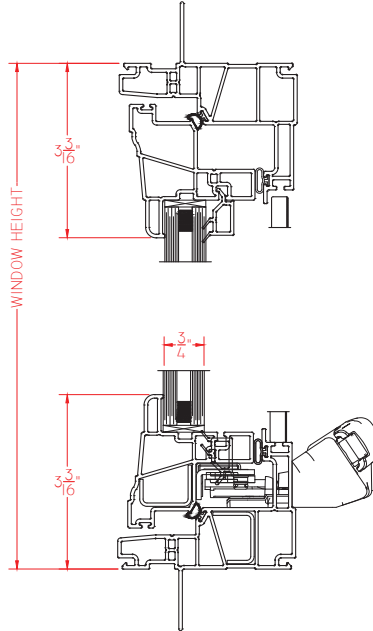
Products

Casement

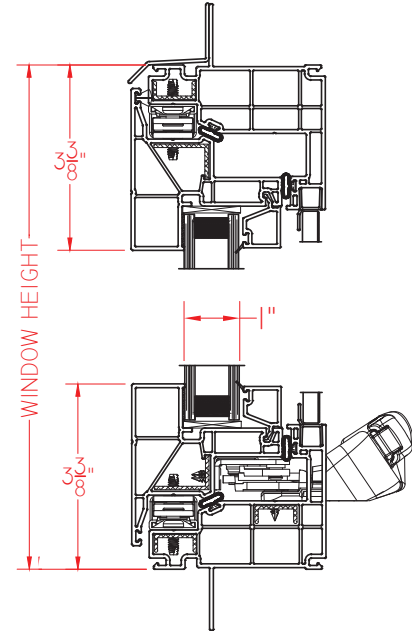
V200 Series (R40)



V250 Series (LC30)



V300/V700 Series (CW50)



All ratings listed are NAFS certified

Azul North Park
San Diego, CA
Developer: Floit Properties
Contractor: Suffolk, Inc.
Architect: JWDA Architects
Comm. Window Distributor: Hardy Windows



Courtesy Floit Properties



www.QuakerCommercialWindows.com

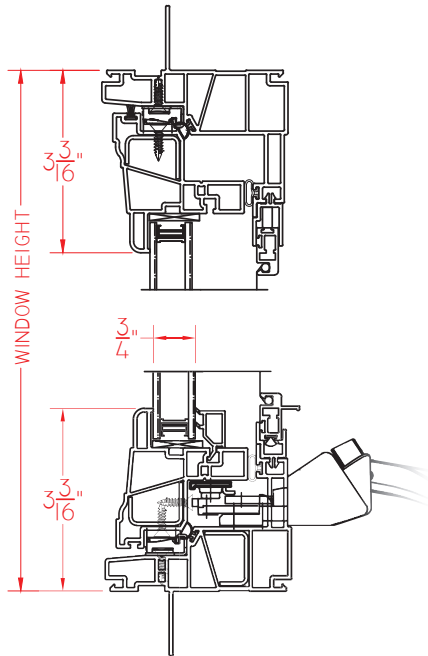
V-SERIES

COMMERCIAL VINYL WINDOWS & DOORS

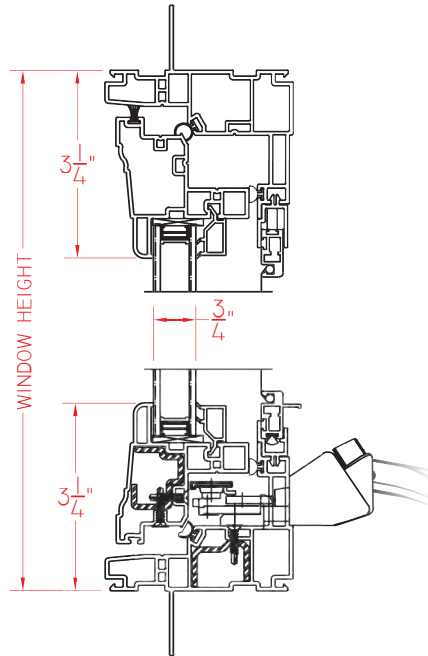
Products

Project-Out

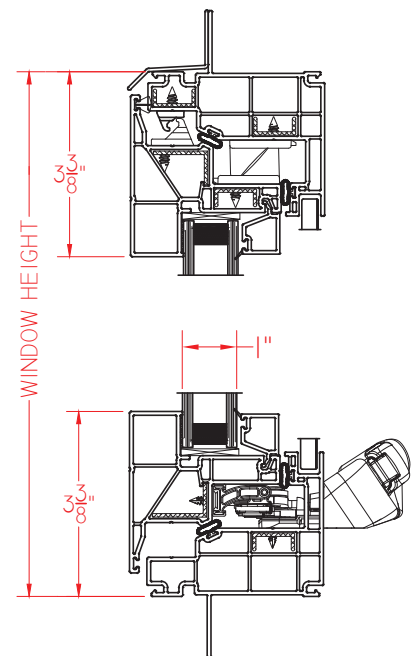
V200 Series (R40)



V250 Series (LC35)



V300/V700 Series (CW50)



All ratings listed are NAFS certified

Seven at Seven Mile Creek
Nashville, TN
Developer: Avenue Construction
Contractor: Avenue Construction
Architect: Barnett Design Studio
Comm. Window Dist.: Architectural Visions



Courtesy Seven at Seven Mile Creek

800-347-0438



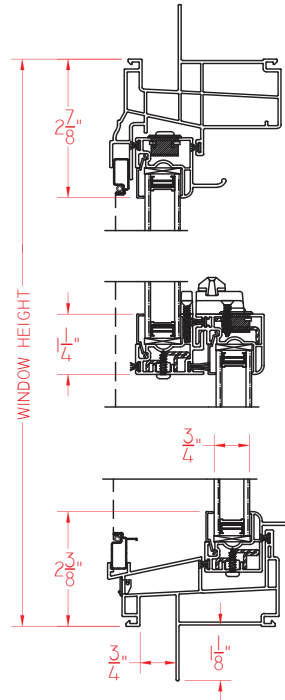
V-SERIES

COMMERCIAL VINYL WINDOWS & DOORS

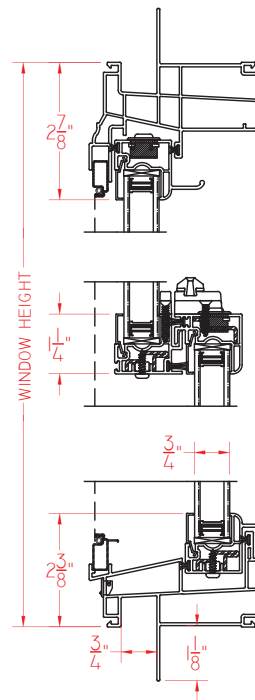
Products

Double Hung

V200 Series (R40)



V250 Series (LC35)



All ratings listed are NAFS certified



The Red Apartments
Cincinnati, OH
Developer: To Life, LTD
Contractor: Turnbull-Wahlert Construction
Comm. Window Distributor: Forge Lumber

Courtesy The Red Apartments

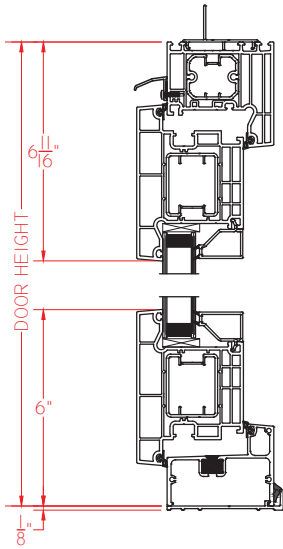
V-SERIES

COMMERCIAL VINYL WINDOWS & DOORS

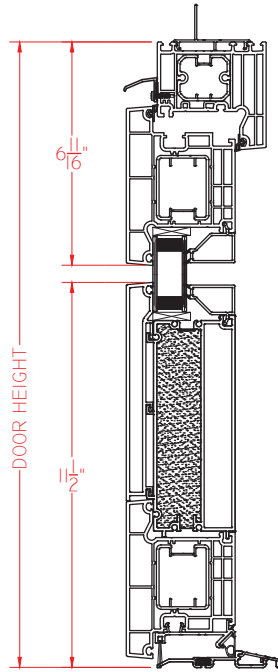
Products

Terrace Doors

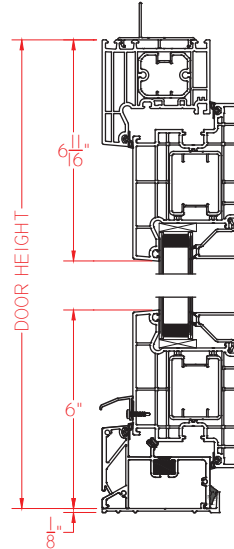
V300 Series (CW50*)
Outswing w/standard sill



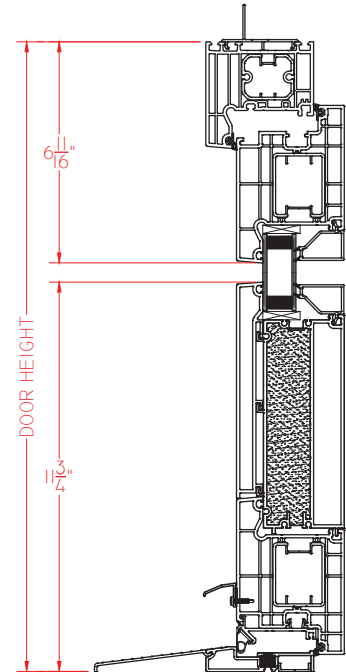
V300 Series (CW50*)
Outswing w/ADA sill



V300 Series (CW50*)
Inswing w/standard sill



V300 Series (CW50*)
Inswing w/ADA sill



**-ratings are projected. Testing in progress as of 4-2023.*



800-347-0438



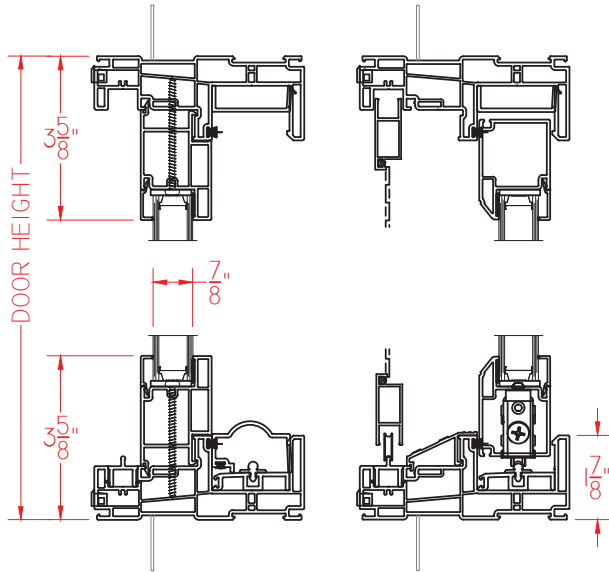
V-SERIES

COMMERCIAL VINYL WINDOWS & DOORS

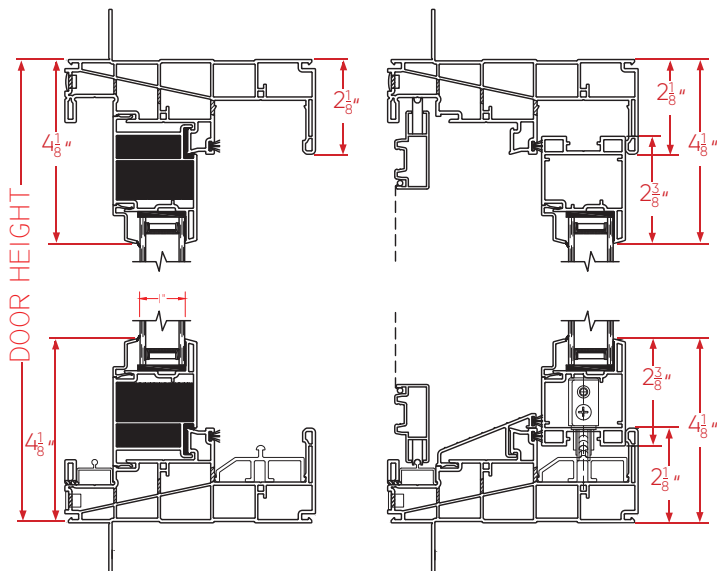
Products

Sliding Doors

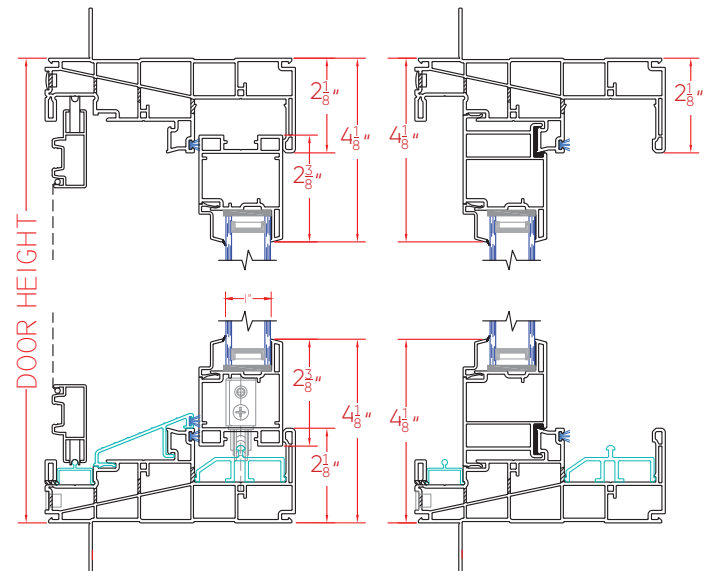
V100 Series (R50)



V200 Series (R50)



V250 Series (LC40)



All ratings listed are NAFS certified

V-SERIES

COMMERCIAL VINYL WINDOWS & DOORS

Products

Impact (V700)

- Meet ASTM 1886 (Large Missile Impact - Level D) testing requirements
- Casement, Project-Out and Fixed models
- Nail Fin or Trim/Clip anchorage systems for operating models
- Nail Fin anchorage system for fixed model

Florida Building Code

- Meets all required FBC calculations
- Casement: FL40310.2 (2020 Code Version)
- Project-Out: FL36916.3 (2020 Code Version)
- Fixed: FL36903.3 (2020 Code Version)
- Approved anchorage systems
- See full information at FloridaBuilding.org

The Acorn on Person Street
Raleigh, NC
Developer: Person Street Apartments LLC
Contractor: Williams Realty & Building Inc.
Architect: Cline Design Architects
Comm. Window Distributor: Morrison Millwork

Courtesy of Williams Realty & Building / wrbco.com

800-347-0438



V-SERIES

COMMERCIAL VINYL WINDOWS & DOORS

Products

LEED®

- All V-Series models can assist with garnering LEED points
- LEED Building Design and Construction (LEED BD+C) works for both new construction and replacement commercial projects
- World's preeminent green building organization



PHIUS+

- V300 Series Casement and matching Fixed models are PHIUS certified
- Comply with PHIUS+ 2015 Passive Building Standard
- Applicable to all commercial building types and U.S. climate zones
- Best-practice building design for engineers, developers, builders and construction professionals



Woodland Glenn IV
Lexington, KY
Developer: University of Kentucky
Architect: Sherman Carter Barnhart
Contractor: Messer Construction
Comm. Window Dist.: Kidd Glass Inc.



Photo by Phebus Photography



www.QuakerCommercialWindows.com

V-SERIES

COMMERCIAL VINYL WINDOWS & DOORS

Options and Accessories

Vinyl Colors, Painted Exteriors & Laminates

Vinyl Colors

- 100% pure uPVC colors hold a bright sheen and won't fade like re-ground vinyl
 - » White
 - » Sandstone

(New) Textured
Dark Grey
Available as a
Painted Exterior &
Laminate Exterior

Painted Exteriors

- Painted vinyl allows Quaker to offer an exterior color palette which far exceeds traditional expectations.
 - » Black
 - » Dark Bronze
 - » Redwood
 - » Holly Green
 - » Toffee
 - » Chestnut
 - » Earthtone
 - » Sandstone
 - » Beige
 - » Satin Creme
 - » White
 - » Resembles Clear Anodized
 - » Textured Black
 - » Textured Dark Bronze
 - » Textured Resembles Clear Anodized
 - » (NEW) Textured Dark Grey
- Exterior color selections expand even further because of Quaker's ability to produce any custom exterior color you have in mind
- All painted vinyl finishes meet FGIA 615-05, the highest, most superior vinyl painted finish available.

Laminate Coatings

- Four high-performance laminate coatings can be applied to the exterior of all Quaker V-series products*, paired with a white interior for a two-tone appearance
 - » Textured Black
 - » Textured Dark Bronze
 - » Textured Resembles Clear Anodized
 - » (NEW) Textured Dark Grey
- Depending upon your product of choice and your color preference, laminate can be added to the interior too.
- All Quaker laminates meet quality and test requirements in accordance to RAL GZ716/1

**Some limitations may apply.*

District @ 6th
Des Moines, IA
Developer: TWG Development
Architect: TWG Development
Comm. Window Distributor: Lite Inc.



Warranty

- 10 year limited warranty on vinyl colors, painted exteriors and laminate coatings
- See complete warranty details on our website

800-347-0438



V-SERIES

COMMERCIAL VINYL WINDOWS & DOORS

Options and Accessories

Glass & Grids

Pane thickness:

- $\frac{3}{32}$ "
- $\frac{1}{8}$ "
- $\frac{5}{32}$ "
- $\frac{3}{16}$ "
- $\frac{1}{4}$ "
- $\frac{5}{16}$ "

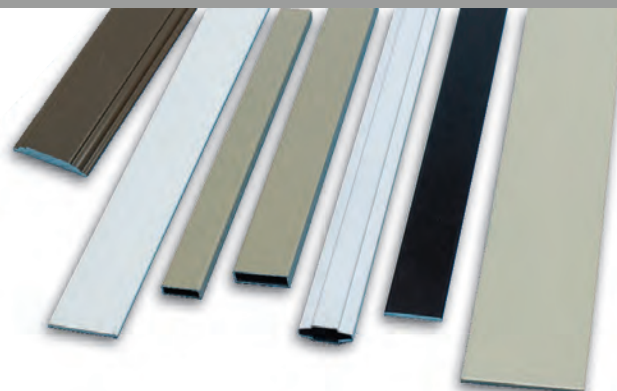
I.G. thickness:

- $\frac{3}{4}$ " (Double pane)
- 1" (Double pane)
- $1\frac{3}{8}$ " (Triple pane)

Glass Types:

- Dual Silver Low-E
- Triple Silver Low-E
- Interior Pane Low-E
- Tempered Safety Glass
- Laminated
- Spandrel
- Neat+ Low Maintenance
- Obscure (for privacy)
- Tinted
- Bird Glass
- and many others

Some limitations may apply based upon several variables including but not limited to the window/door series chosen and requested/required specifications.



Grids Between the Glass

- Flat or Contoured

Simulated Divided Lites

- Numerous profiles and combinations available

This is a small sampling of the many grid profiles Quaker has available.

Hanover Cross Street
Baltimore, MD
Developer: The Hanover Company
Contractor: The Hanover Company
Commercial Window Dist.: Revolution Bldg. Supply



www.QuakerCommercialWindows.com

V-SERIES

COMMERCIAL VINYL WINDOWS & DOORS

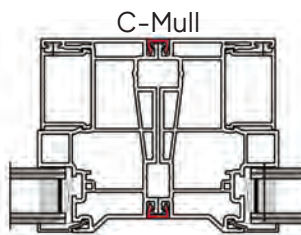
Options and Accessories

Mulls

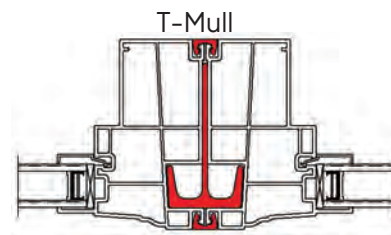
Glasswater Creek of Plainfield
Indianapolis, IN
Developer: CRF Development
Contractor: T & W Corp.
Comm. Window Dist.: Timberland Home Center



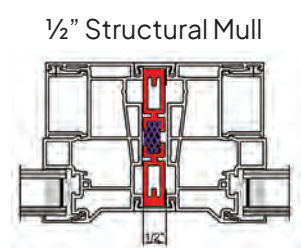
Whether stacking windows or pairing them side-by-side, our V-Series reinforced and structural mulling systems deliver confidence. They won't flex at the first sign of wind and their design leaves no room for infiltration.



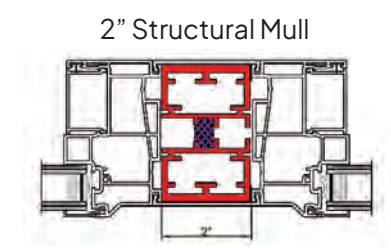
C-Mull



T-Mull



1/2" Structural Mull



2" Structural Mull

**Usage limitations may apply*

Accessories

Quaker can provide a multitude of accessories for your V-Series install -- no matter what product you choose. These can be factory applied or sent loose for jobsite installation.*

- Casing
- Panning
- Receptor
- Subsill
- Louver systems to accommodate HVAC

Other factory-applied options and accessories include:

- WOCD (Window Operating Control Device)
- Trickle Vent
- and more.

**Some limitations may apply*

The Yards
Kansas City, MO
Owner: Flaherty & Collens
Contractor: MW Builders
Architect: Kem Studio
Comm. Window Dealer: Ziegler's Glass



800-347-0438



V-SERIES

COMMERCIAL VINYL WINDOWS & DOORS

Product Comparison Guide

Features	V100	V200	V250	V300	V700
Insulating Glass	3/4"	3/4"	3/4"	1"	1"
Mitered/Fusion Welded Corners	✓	✓	✓	✓	✓
Vinyl Colors (<i>White and Sandstone</i>)	Windows only	✓	✓	✓	✓
Painted Exterior (615-05 FGIA finish)		✓	✓	✓	✓
High-performance Textured Black Laminate (<i>Exterior</i>)	✓	✓	✓	✓	✓
High-performance Textured Black Laminate (<i>Interior and Exterior</i>)		✓	✓	✓	✓
High-performance Dark Bronze Laminate (<i>Exterior</i>)		✓	✓	✓	✓
High-performance Resembles Clear Anodized Laminate (<i>Exterior</i>)				✓	✓
Integral Nail Fin	✓	✓	✓	✓	✓
Multi-point Locking System w/Flip-down handle (<i>Casement and Project-Out models</i>)		✓	✓	✓	✓
Heavy-Commercial 4-bar hardware (<i>Casement and Project-Out models</i>)		✓	✓	✓	✓
Low-Profile cam lock (<i>Hung and Sliding models</i>)	✓	✓	✓	✓	
Integral J-Channel (<i>Hung and Sliding Models</i>)		✓	✓		
Aluminum Screen with BetterVue™ mesh (<i>Hung and Sliding models</i>)	✓	✓	✓	✓	
FlexScreen™ (<i>Casement and Project-Out models</i>)		✓	✓	✓	✓
Aluminum Screen with BetterVue™ mesh (<i>Sliding Door</i>)	✓	✓	✓		
Recommended usage (# of stories)	1 to 4	1 to 4	1 to 5	1 to 11	1 to 11

Options	V100	V200	V250	V300	V700
Casement/Project-Out models		✓	✓	✓	✓
Single Hung/Double Hung models	Single Hung only	✓	✓	Single Hung only	
Horizontal Slider models	✓	✓	✓	✓	
Fixed models	✓	✓	✓	✓	✓
Doors	Sliding	Sliding	Sliding	Terrace	
Wide Variety of Low-E/Argon glazing combinations	✓	✓	✓	✓	✓
1 3/8" Glazing				✓	✓
PHIUS Certified				Casement & Fixed	
Muntins - GBG (<i>Grids Between Glass</i>) 5/8" or 3/4"	5/8" only	✓	✓	✓	✓
Muntins - SDL (<i>Simulated Divided Lites</i>)		✓	✓	✓	✓
Reinforced Mullions	✓	✓	✓	✓	✓
1/2" and 2" Structural Mullions	1/2" only	✓	✓	✓	✓
Egress Hardware (<i>Casement Windows</i>)		✓	✓	✓	✓
Limited Travel Hardware		✓	✓	✓	✓
Finless Main Frame	✓	✓	✓	✓	✓
Extruded Aluminum Screen Frame with aluminum wire mesh		✓	✓	✓	✓
Extruded Aluminum Screen Frame with stainless steel 0.009" mesh thickness		✓	✓	✓	✓

V-SERIES

COMMERCIAL VINYL WINDOWS & DOORS

Support Services

Quaker's expertise and support services are unmatched in the industry. While every project is distinct, Quaker offers in-house processes which consistently cover every detail. These fool-proof procedures ensure your project and our V-Series products are a perfect match.

- Quaker has a dedicated commercial team with more than 125 years of industry experience
- Quaker's team will assist with every facet; design development, budgetary aspects, and project management



PROJECT AND SPECIFICATION REVIEW

How many stories are in the building?
Where is it located?
How large are the windows?
These and other important questions must be answered before moving forward.



ENGINEERING & DESIGN ASSESSMENT

After evaluating every component making up your project, our professional engineering expertise is put to work, as we carefully calculate customized solutions to best meet your spec's requirements.



LOCAL AND ARCHITECTURAL SALES SUPPORT

Quaker's Sales Representatives, many with 25+ years of knowledge and industry pedigree, have a vested interest in working beside you...not from afar. If you have questions, they want to answer them. If you have a concern, it's their concern too.



The Quaker Difference: More than meets the eye.

Since 1949, The Quaker Difference has meant providing more than just windows and doors. It's a standard of quality, engineering and craftsmanship that distinguishes us from all other window and door manufacturers in America. That commitment continues with our V-Series of commercial vinyl products.

- It's a standard of craftsmanship and engineering excellence we build into every product, distinguishing us from all other window companies in America.
- It's professional manufacturing specialists, some with more than 40 years of window experience, providing unparalleled attention to detail from start to finish.
- It's shying away from testing at entry-level, gateway sizes. Instead, we test using gateway and maximum sizing. This ensures the entire scope of a product's sizing will meet the advertised rating.
- It's multiple quality checks implemented throughout the manufacturing process to guarantee a paramount product.
- It's our state-of-the-art vinyl paint facility. Unlike many manufacturers that outsource, Quaker controls the quality and consistency of our finish in-house.
- It's employing thicker glass panes which will both lower the amount of stress cracks and raise your ability to control sound intrusion.
- It's our "can-do" attitude toward custom projects. Never is a job too custom for Quaker. Our option and accessory choices allow us to do what others can't.
- It's doing more than just selling windows and doors. It's finding the right window and door solution for your project.



That's *The Quaker Difference*.

SOHO Apartments
St. Louis, MO
Owner: El Capitan One, LLC
Contractor: Big Sure Construction
Architect: VE Design Group
Comm. Window Distributor: XL Building Products



800-347-0438






V-SERIES

COMMERCIAL VINYL WINDOWS & DOORS

Find more information on Quaker windows and doors



 www.QuakerCommercialWindows.com

 1-800-347-0438

 commercial@quakerwindows.com



Made in America: All Quaker products are designed and manufactured in the United States at our state-of-the-art facilities in Eldon, MO (above) and Freeburg, MO.



July, 2023 V3



ON THE COVER:

Verve Columbus
Columbus, OH
Developer: SubText
Contractor: Brinkman Constructors
Architect: Bass Studio Architects
Comm. Window Distributor: G2 Architectural